

Connecting Remotely To A SafeGuard DVR

There are 2 ways to connect to a remote DVR.

1. Launch the Remote Client, enter your connection information and then click Connect. This way is ideal if you only have one site to connect to. You can opt to have the client save the connection information so you do not have to reenter it each time.
2. Setup the connection information first in the Site manager. And then connect to your site(s) from the Site manager. This is useful if you have more than one site to connect to, you can have a list of sites that you can connect to by simply selecting them from the Site Manager. Refer To : **Adding a site to the Site Manager**

This section focuses on connecting to a remote DVR using the Remote Client.

Start the SafeGuard Remote Client, either from the desktop shortcut or from the Start menu, Start > All Programs > SafeGuard Remote Client > SafeGuard remote Client v8

When the client starts you will be presented with the Login Dialog.

Enter the remote DVRs IP address or Serial Number (The serial number will start with LT or SG). Enter the username and password, this is the same username and password you use locally at the DVR.



If you wish to have the login information saved, so you do not have to retype it each time select Remember Me.

Click Login to connect to your DVR.

If successful you will see your cameras after a short delay. If unsuccessful you will see a message indicating a failure and the reason.



Adding a site to the Site Manager

Start the Site Manager, by double clicking the icon on the desktop or from the start menu. Start > All Programs > Safeguard Remote Client > SafeGuard SiteManager v8



When the Site Manager starts, click the 'Add Site' button.



Enter the Site Name (a name of your choice describing the site).

The Serial# or IP address (the serial number of the DVR, usually starting with LT or SG. Or the IP address of the DVR)

The Username and Password (This is the same username and password you use when physically at the DVR. The factory default is user : 1 and pass : 1)

For now leave all other options at their default.

Click Save.

After adding your site, it will appear in the main site list.

To connect to the site either double click on the entry or move your mouse over the entry and click the Connect button.



The Remote Client will then launch and attempt to connect to the site.

If successful you will see your cameras after a short delay. If unsuccessful you will see a message indicating a failure and the reason.



Searching Recorded Video

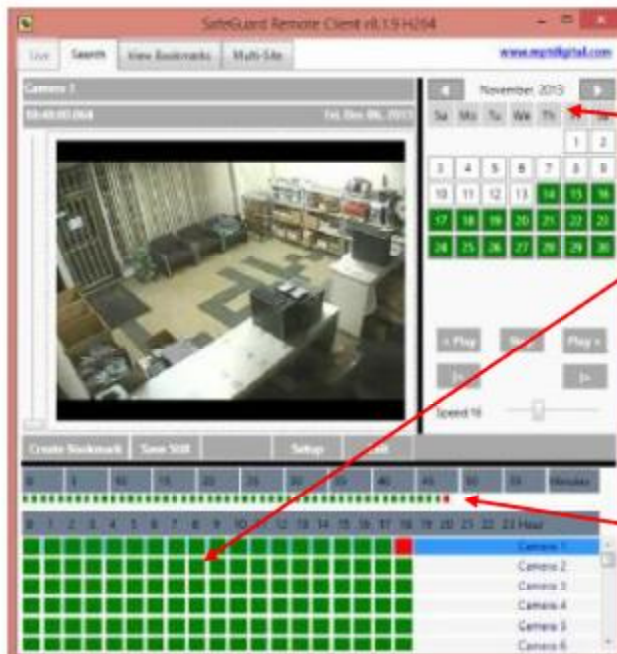
Start the SafeGuard Remote Client and connect to the DVR you wish to search.

If connected to a single site you can initiate search by either clicking on the search tab or right clicking over a camera you wish to search and select 'Search This Camera'.



When using multi-site view, select the camera you wish to search first, then either click the search tab or right click and select 'Search This camera'.

The Search Screen



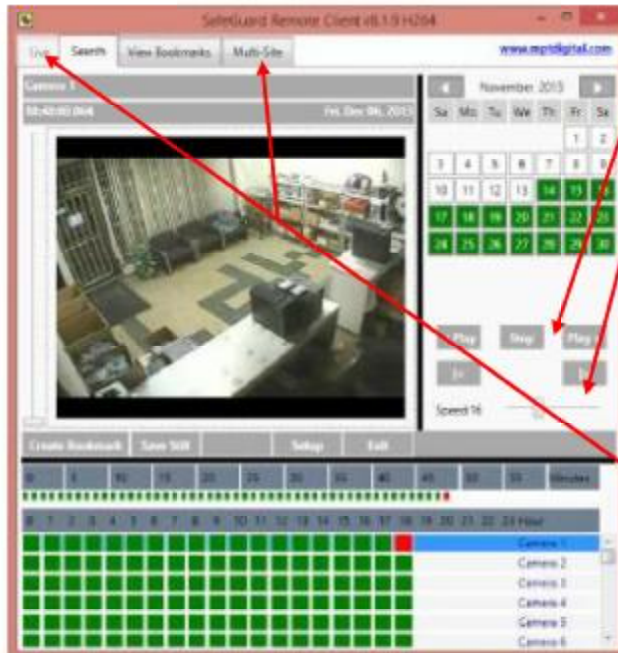
Here you can search through the recorded images for any camera at a particular site.

The calendar displays days in green that have recorded video. Select the day you wish to search for video.

Once you have clicked on a day, the hour chart will be filled in. The hour section displays camera hour information on each row. Each green block represents an hour where there is recorded video for that particular camera.

Once you have clicked on an hour, the minute row will be filled in. The minutes are represented from 0 to 60. Each green block represents a minute where there is recorded video for the selected hour of the selected camera.

Search continued.



Once you have selected the day, hour and minute you are interested in, you may then play forward, reverse or frame by frame.

You may also control the playback speed by using this control.

When you have finished searching for the video you are interested in, you may return to live the camera view by either selecting the tab (Live or Multi-Site, only one will be enabled depending on which more you are in). Selecting Exit will also return you to the appropriate Live view mode.